



# Rancho Carmel Plaza

10155-10195 Rancho Carmel Dr, San Diego, CA 92128

IDEAL FOR COFFEE, BAKERY, HEALTH & FITNESS, PET GROOMING, AND QUICK SERVE FOOD



## Rancho Carmel Plaza

10155-10195 Rancho Carmel Drive

For Lease



## Property Highlights

- Located at the signalized intersections of Rancho Carmel Drive and Ted Williams Parkway, just off of the I-15 freeway
- Nearby area retailers include: Costco, The Home Depot, Trader Joe's, Ross, Nordstrom Rack, Marshall's, TJ Maxx, PetCo, Best Buy, Staples, 24 Hour Fitness, Floor & Decor, BevMo, Ulta, Party City and more!
- Per year, Rancho Carmel Plaza receives approximately 330.1K visits from consumers, 98.9K visitors and their average dwell time per visits is 84 minutes (Source: Placer AI)
- Available Suites
  - A106 - 1,209 SF
  - A108 - 1,203 SF
  - A114 - 2,233 SF (Available 7/1/2023)
  - A120 - 720 SF
  - C100 - 1,860 SF | End cap fronting Rancho Carmel Drive

Demographics	1 Mile	3 Miles	5 Miles
2022 Population - Current Year Estimate	14,438	111,416	271,203
2027 Population - Five Year Projection	14,804	111,559	270,137
2022 Average Household Income	\$137,536	\$168,489	\$176,468
2027 Average Household Income	\$158,939	\$194,851	\$204,314
2022 Housing Units	5,452	39,619	95,909
2022 Households - Current Year Estimate	5,371	39,100	93,426
2027 Households - Five Year Projection	5,504	39,169	93,109
2022 Daytime Population	12,302	95,116	249,796

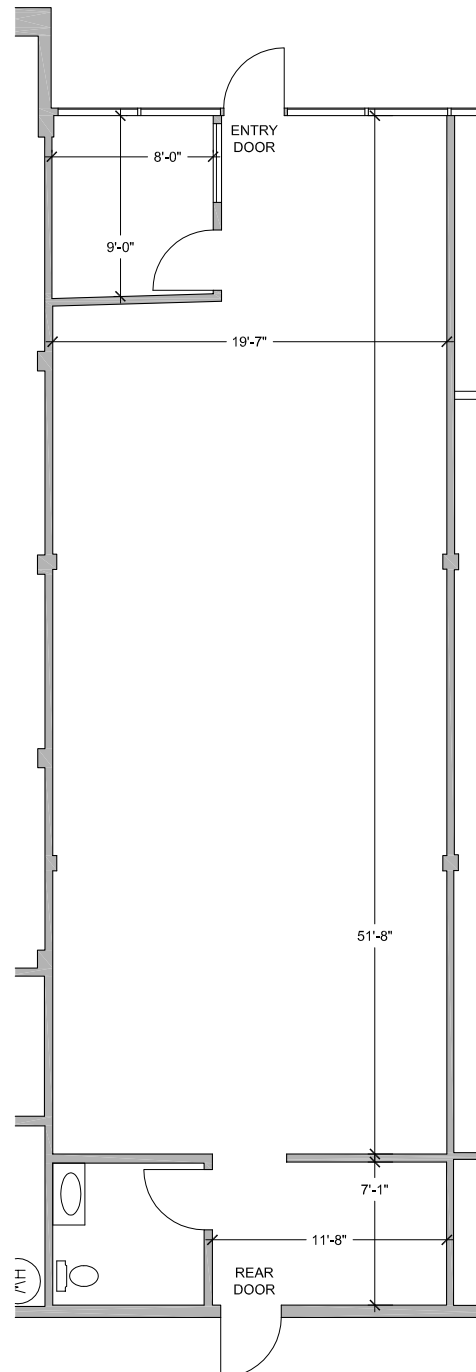




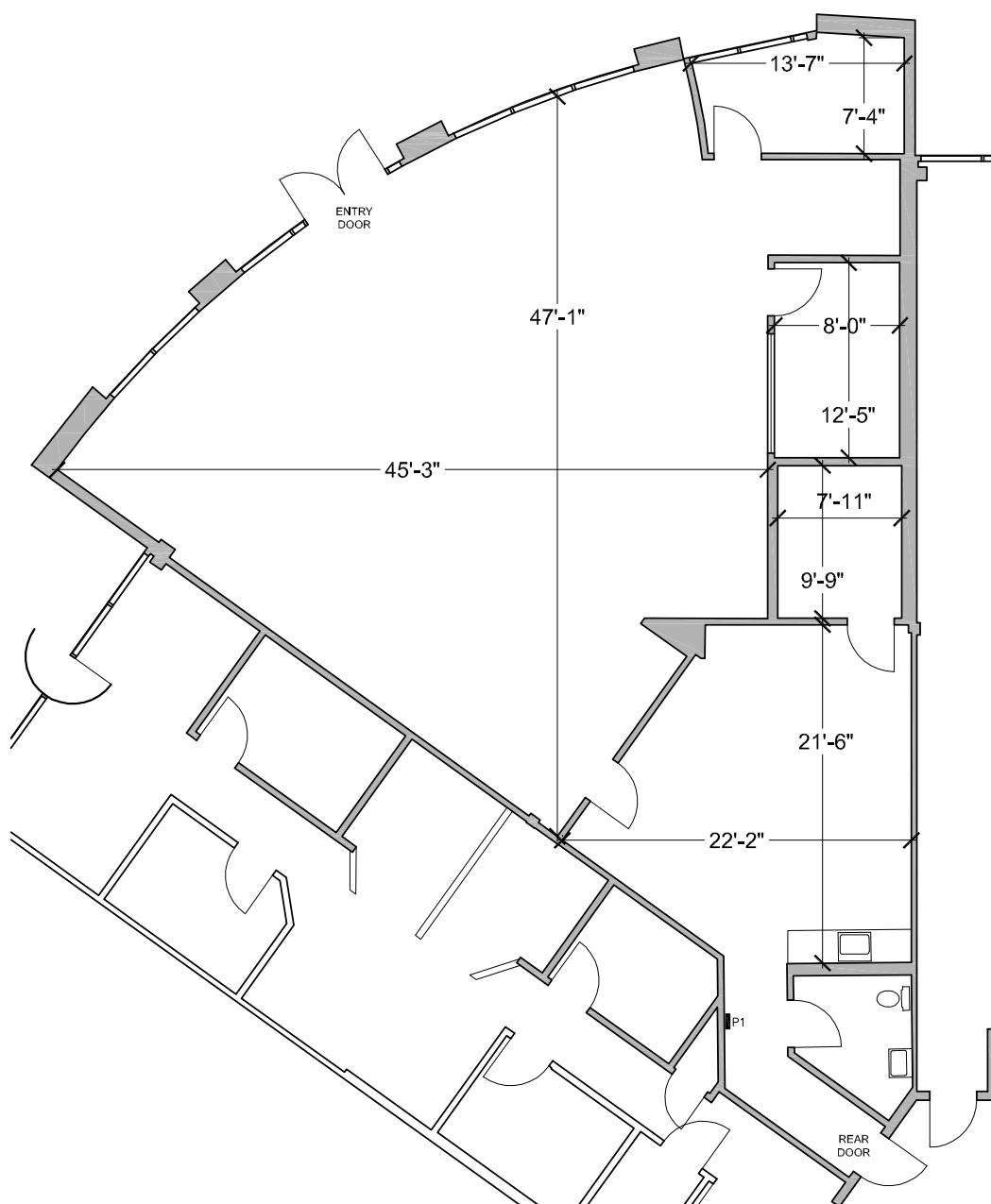
This site plan is not a representation, warranty or guarantee as to size, location or identity of any tenant, and the building, improvements, parking, ingress and egress are subject to such changes, additions and deletions as the architect, Landlord or any governmental agency may direct. Any specified tenant referenced herein is subject to change, deletion, change of location, etc. at any time without prior notice.



Suite A108

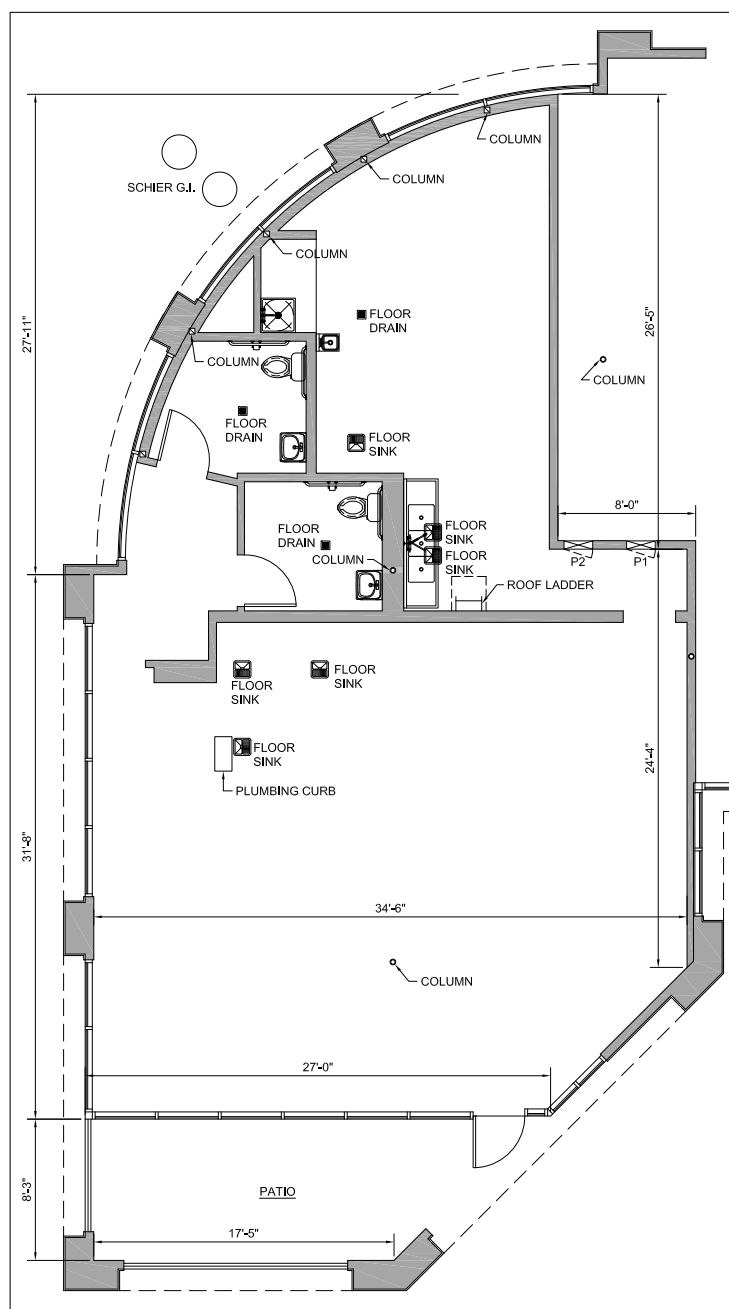


## Suite A114



## Suite C101

Former Starbucks/Restaurant Space







## Contact Us

**Reg Kobzi**

Senior Vice President  
+1 858 546 4604  
reg.kobzi@cbre.com  
Lic. 00917639

**Joel Willson**

First Vice President  
+1 858 546 4651  
joel.wilson@cbre.com  
Lic. 01237516

**Michael Peterson**

Vice President  
+1 858 646 4749  
michael.peterson@cbre.com  
Lic. 01969314

©2022CBRE, Inc. All rights reserved. This information has been obtained from sources believed reliable but has not been verified for accuracy or completeness. CBRE, Inc. makes no guarantee, representation or warranty and accepts no responsibility or liability as to the accuracy, completeness, or reliability of the information contained herein. You should conduct a careful, independent investigation of the property and verify all information. Any reliance on this information is solely at your own risk. Photos herein are the property of their respective owners. Use of these images without the express written consent of the owner is prohibited. CBRE and the CBRE logo are service marks of CBRE, Inc. All other marks displayed on this document are the property of their respective owners, and the use of such marks does not imply any affiliation with or endorsement of CBRE.